



( - )

( )

*Giardia* *Eimeria* *Cryptosporidium*

.( )

*Eimeria*

*Giardia* *Cryptosporidium* *Eimeria*  
( ) Deloul Urquhart

.( )

-

*Eimeria*

-

P<0.05 P<0.001

Chi square

*Giardia*

.( )

-

.( )

*Cryptosporidium*

.( )

*Cryptosporidium*

*Giardia*

.( )

% ,

*Cryptosporidium*

*Giardia*  
( )

% ,

% ,

.( )

*Giardia lamblia*

% ,

/  
( ) % ,

.( )

.( ) % ,

% ,

*Cryptosporidium*

.( ) %

*Cryptosporidium*

( )

% , *Eimeria*

.% ,

% , *Giardia*

.( ) *Cryptosporidium*

*Giardia*

*Giardia*

% *Eimeria*

% ,

% , *Cryptosporidium*

*Giardia*

*Eimeria*

( )

( )

)

% ,

.(

)

( )

(

*Giardia*

*Cryptosporidium*

*Eimeria*

.P<0.001

% ,

% ,

.P<0.05

( )

:

( )

( - )

:

% ,	% ,	% ,
%	%	% ,
% ,	% ,	% ,

:

<i>Giardia</i>	<i>Eimeria</i>	<i>Cryptosporidium</i>
% ,	% ,	% ,
% ,	% ,	% ,
% ,	% ,	% ,

:

<i>Cryptosporidium</i> <i>Eimeria</i>	<i>Giardia</i>	<i>Eimeria</i>	<i>Cryptosporidium</i> <i>Giardia</i>	<i>Cryptosporidium</i> <i>Eimeria</i>
% ,	% ,	% ,	% ,	% ,
%	% ,	% ,	% ,	% ,
% ,	% ,	% ,	% ,	%

:

,	,	,	-
,	,	,	-
,	,	,	-
,	,	,	

% ,

*Cryptosporidium* *Eimeria*  
*Giardia*

)  
(

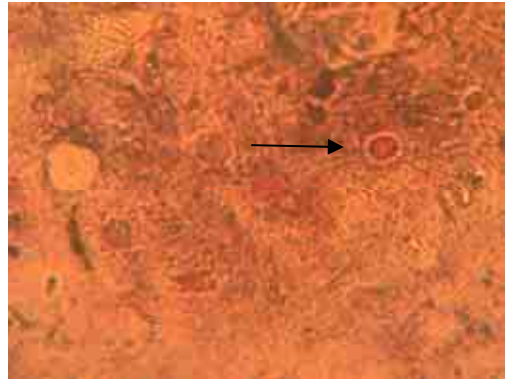
( ) % ,

( - )

( ) Skerrett Fayer et al

*Cryptosporidium*

% ,  
% -  
% ( )  
( ) % , ( )



*Cryptosporidium* sp. :  
( )  
.100X

% , *Eimeria*

*Eimeria*  
( ) % ,  
( ) % ,  
%



*Eimeria* sp. :  
.100X

*Giardia*

% ,  
*Giardia* ( )  
% , ( )  
% ,

( ) Radostits et al

- *Giardia* %

% , *Giardia* *Cryptosporidium*  
( ) % ,

( )  
% , ( )



*Giardia* sp. :  
( )  
.100X

- 7. Fayer R, Trout J M, Graczyk T K , Lewis E J. Prevalence of *Cryptosporidium* , *Giardia* and *Eimeria* infections in post-weaned and adult cattle on three Maryland farms. *Vet Parasitol.* 2000;93(2):103-12.
- 8. Reese N C, Current W I, Ernst J V , Bailey W S. *Cryptosporidium* of man and calf: a case report and results of experimental infections in mice and rats. *Am J Trop Med Nyg.* 1982;31(2):226-229.
- 9. Garcia S , Brackner D A. Intestine of protozoa: Coccidia and microsporida In: *Diagnostic medical parasitology.* 2nd ed; Amer Sci Microbiol Washington DC; 1993: pp355-372.

% ,

( ) Fayer *et al*

% ,

: ( ):

: ( ) .

% ,

% ,

: ( ):

*Giardia*

*Cryptosporidium Eimeria*

: ( )

- 14. Baron EJ, Schennane C , Tanhenbaum M. Comparison of three methods for detection of *Cryptosporidium* Oocysts in a low prevalence population. *J Clin Microbiol* 1984;27(1):223-224.
- 15. Baron E J, Peterson L. , Finegold S M. *Diagnostic microbiology.* 9<sup>th</sup> ed. Mosby-Yearbook. Inc. St. Louis; 1994. pp792.
- 16. Deloul W H.. *Color Atlas of Parasitology.* Vol 2. Format utile, France; 1999. pp34-63 .
- 17. Bruning L J, Kintz BI, *Computational handbook statistics,* 2<sup>nd</sup> ed. Scott Foresman and company England; 1977: pp 233-237.
- 18. Skerrett H E and Holland C V. A symptomatic shedding of *Cryptosporidium* oocysts by red deer hinds and calves. *Vet Parasitol.* 2001;94(4) 239-46.

*Cryptosporidium*

: ( )

- 20. Kadir A A M. Cryptosporidiosis in man and animals in Al-Tameem province – Iraq. *Iraqi J Vet Med.* 2004;28. (1):235-243.

*Eimeria*

/

: ( )

- 22. Al-Mssawi A Y , Khalal A M. Some infections causes of diarrhea in new born calves in Iraq. *The Veterinarian.* 1997;6,7(71):106-113.
- 23. Henker K E, Morscher H, Marschang F, Timme A , Dalchow W. Zum Auftreten der Rinderkokzidiose in den Regionen Nordschwarzwald , untere Neckar – Entste – hungsbedingungen, Verlauf , Bekämpfung. *Vet Med Nachr.* 1979;1-25.
- 24. Ruest N, Couture Y, Faubert G M , Girad C. Morphological changes in jejunum of calves naturally infected with *Giardia* spp. a *Cryptosporidium* spp. *Vet Parasitol* 1997;(69):177-186.

(*Eimeria Giardia Cryptosporidium*)

( )

- 1. Urquhart G, M Armour J, Duncan J L, Dunn A M Jennings F W. *Veterinary Parasitology.* 2<sup>nd</sup> ed. Black well Science; 2003: pp 222-234, 276.
- 2. Dubey J P. Intestinal Protozoa infections. *Vet Clin North Am Small Anim Pract.* 1993;23(1):37-55.
- 3. Radostits OM, Gay CC, Blood DC, Hinchlif K W. *Veterinary Medicine. A text book of disease of cattle, sheep, pigs, goats and horses.* 9<sup>th</sup> ed. WB. Saunders Company Ltd. London; 2000: pp577-566.
- 4. Steiner T S, Theilman N M, Guerrant R L. Protozoal agents: What are the dangers of public water supply?. *Annu Rev Med.* 1997;48:329-40.
- 5. Frasser A.. *The merck veterinary manual.* 7<sup>th</sup> ed. In: frasser CM. (Ed.), merk & Co. Rahway, NJ; 1991: pp 108.
- 6. Berriatua E, Green L E., Morgan K L. A descriptive epidemiological study of coccidiosis in early lambing housed Flocks. *Vet Parasitol.* 1994;54:337-351.